



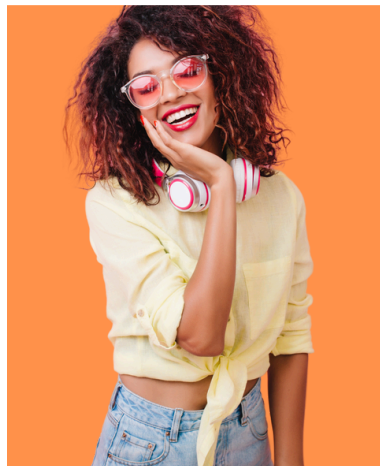
WOMEN'S LIFESTYLE EXPO

THIS IS WHERE
WOMEN THRIVE &
**BRANDS
SHINE!**

EXHIBIT WITH US

As an exhibitor, *your brand will inspire positive change* in every area of a woman's life - mental and physical wellness, beauty, fashion, finance, personal growth, everyday essentials and more. This is a unique opportunity to shine in front of an audience eager to discover products and services that help them thrive.

Let's Fuel the Passion, Purpose, and Power of Idaho's Women



FEBRUARY 14TH

EXPO IDAHO || 10AM - 4PM

WOMENSLIFESTYLEEXPO.COM

**CONTACT US TODAY TO
RESERVE YOUR BOOTH**

208.376.0464

INFO@IBLEVENTSINC.COM



WOMEN'S LIFESTYLE EXPO



IMPORTANT DATES

Move-In - Feb 13 || Friday 10am - 4pm

Event - Feb 14 || Saturday 10am - 4pm

Move-Out - Feb 14 || Saturday 4pm - 6pm

BOOTH PRICING

10x10 Booth || \$425

10x20 Booth || \$750

10x10 Artisan Booth || \$195

50% deposit due with booking

Full balance due 45 days prior to show

BOOTH AMENITIES

Power || \$35

8' Table || \$30

Cloth || \$30

Chairs || \$7 Each

LOCATION

Expo Idaho

5610 N Glenwood St
Garden City, ID 83714

EXHIBITOR BENEFITS

EXPOSURE to Hundreds of
Enthusiastic Women

Create **MORE BUZZ**
Around Your Brand

REACH New Customers

GENERATE SALES of Your
Fabulous Products & Services

BUILD RELATIONSHIPS with
Attendees & Other Exhibitors



Sponsorships Available!

**CONTACT US
TODAY TO RESERVE
YOUR BOOTH!**

208.376.0464 | INFO@IBLEVENTSINC.COM

WOMENSLIFESTYLEEXPO.COM





SPONSORSHIP OPPORTUNITIES

| Sponsor Pricing | Platinum \$3,000 1 Available | Gold \$1,800 2 Available | Silver \$1,100 4 Available | Bronze \$750 6 Available |
|-----------------|------------------------------------|--------------------------------|----------------------------------|--------------------------------|
|-----------------|------------------------------------|--------------------------------|----------------------------------|--------------------------------|

| EXHIBITHALL | | | | |
|-------------------------|---------------------------|-------|-------|-------|
| | 10x20 Premier Location | 10X20 | 10x10 | 10x10 |
| Booth Size | | | | |
| Booth Power Included | ✓ | ✓ | ✓ | |
| Booth 8' Table Included | ✓ | ✓ | | |
| Booth Chairs Included | ✓ | ✓ | | |

| BRAND EXPOSURE | | | | |
|--|---|---|---|---|
| Exclusive recognition as Platinum Sponsor | ✓ | | | |
| Company logo integrated into event branding | ✓ | | | |
| Company logo included on show banners | ✓ | | | |
| Footer ad in event email blast to 1000s of subscribers | ✓ | | | |
| Company name included on radio ad rotation | ✓ | | | |
| Bag sponsor of the event (bags provided by sponsor) | ✓ | | | |
| Company flyer inserted into guest welcome bags | ✓ | ✓ | | |
| Company banner displayed on Expo Idaho fence (provided by co.) | ✓ | ✓ | | |
| One company spotlight featured on social media platforms | ✓ | ✓ | ✓ | |
| First right of refusal for following year | ✓ | ✓ | ✓ | |
| Sponsor mention in press release | ✓ | ✓ | ✓ | |
| Company name hyperlinked on event website | ✓ | ✓ | ✓ | ✓ |
| Company logo displayed on website/email campaigns | ✓ | ✓ | ✓ | ✓ |
| Company logo on sponsor board at show entrance | ✓ | ✓ | ✓ | ✓ |
| Logo featured on all paid social media profiling sponsors | ✓ | ✓ | ✓ | ✓ |

Contact Us Today to Reserve Your Booth

IBLEVENTS.COM
208.376.0464
INFO@IBLEVENTSINC.COM

Bag Sponsor

\$200

- Booth Space not included
- Sponsor provides up to 1000 bags
- Sponsor option to provide IBL flyer to insert into guest bags



FEB 14
EXPO IDAHO
10AM - 4PM



**Contact Us Today
to Reserve Your Booth**

208.376.0464
INFO@IBLEVENTSINC.COM



FLOOR MAP

NORTH EXPO (3RD EXHIBIT HALL)

